

HOW TO SUBMIT A QUIZ:

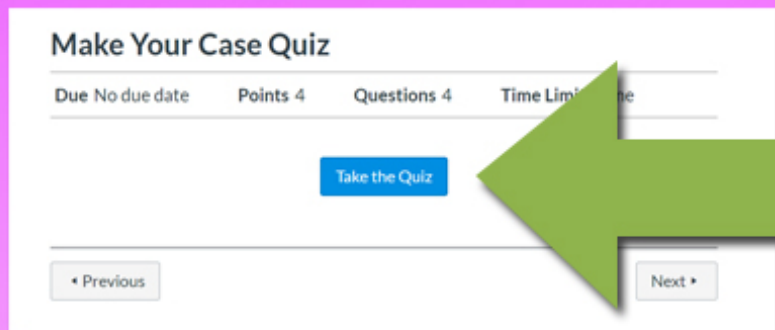
STEP 1: While completing your modules, you will eventually come to a QUIZ. You will know it is a quiz because there is a little rocketship icon next to it.



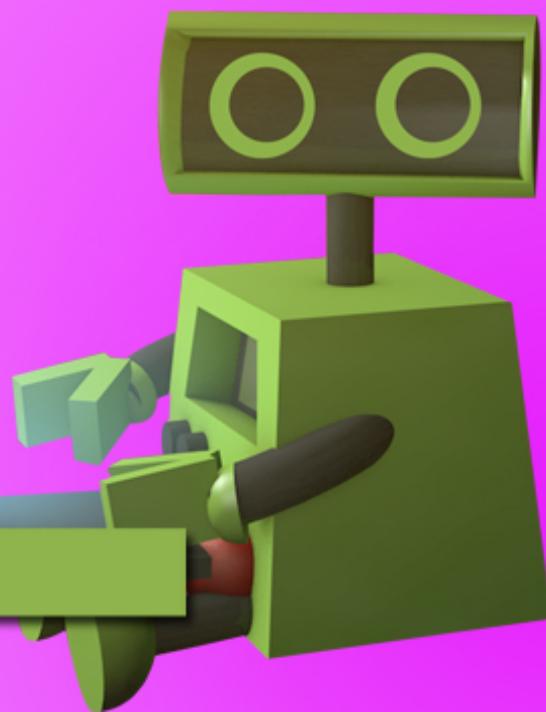
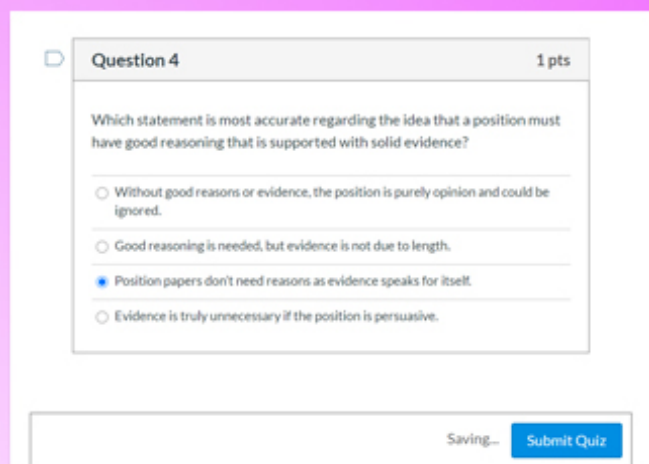
Make Your Case Quiz

4 pts

STEP 2: When ready to take the quiz, you will click the "Take the Quiz" button



STEP 3: After you finish all questions in the Quiz, Click on the SUBMIT QUIZ button.



HOW TO SUBMIT AN ASSIGNMENT:

STEP 1: An Assignment looks different than a quiz. The icon resembles a notebook with a pencil on top of it. Once your assignment is complete, you will click on the assignment link.



Individuals and Grassroots Assignment

25 pts

STEP 2: When ready to submit the assignment, you will click on **SUBMIT ASSIGNMENT**.

Individuals and Grassroots Assignment

Submit Assignment

Due No Due Date Points 25 Submitting a file upload

In this lesson, you completed a worksheet to guide your research about contemporary grassroots movements. Details of the assignment can be found here:

[Individuals and Grassroots Worksheet & Assignment Description](#)

For this assignment, submit both the worksheet and the finished project here when finished. Be sure you have included your name at the top of your document or presentation and as part of the file name.

STEP 3: You now have to find the assignment on your computer. **CLICK CHOOSE FILE** (this is much like attaching a document to an email)! Next, You will pick the assignment you wish to attach.

File Upload | Google Doc | CK-12 Practice | Google Drive

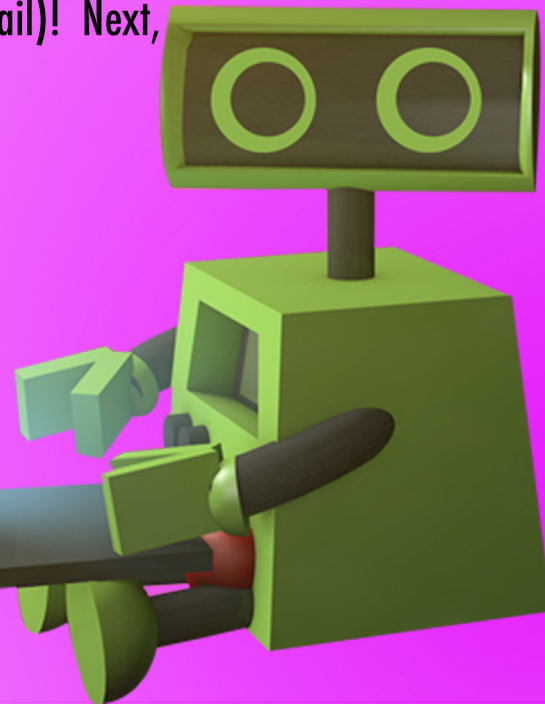
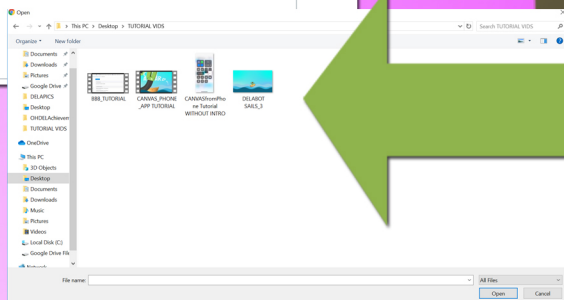
Upload a file, or choose a file you've already uploaded.

File: No file chosen

+ Add Another File

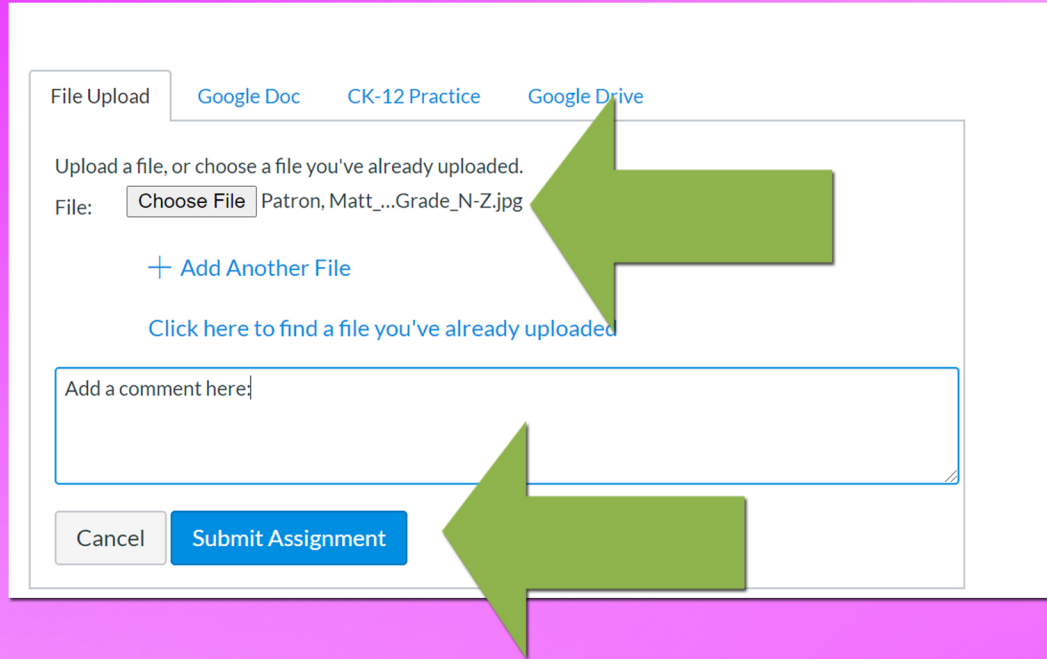
[Click here to find a file you've already uploaded](#)

Comments...



HOW TO SUBMIT AN ASSIGNMENT:

STEP 4: You should now see your assignment listed next to "CHOOSE FILE." You can also add a comment. Once you have everything the way you like, you will hit **SUBMIT ASSIGNMENT** for it to be graded.



The screenshot shows a file upload interface. At the top, there are tabs for "File Upload", "Google Doc", "CK-12 Practice", and "Google Drive". Below the tabs, the text reads "Upload a file, or choose a file you've already uploaded." The "File:" label is followed by a "Choose File" button and the filename "Patron, Matt_...Grade_N-Z.jpg". Below this, there is a "+ Add Another File" link and a link that says "Click here to find a file you've already uploaded". A text input field contains the placeholder "Add a comment here:". At the bottom, there are two buttons: "Cancel" and "Submit Assignment". Three large green arrows point to the "Choose File" button, the comment box, and the "Submit Assignment" button.

